



Windows Embedded Server Platforms Chipset Release Notes

Contents

1.	Overview	3
2.	New in This Release	3
3.	Driver & Platform Support	3
4.	Features list.....	3
5.	Platform configurations	4
6.	Chipset and PSHED Drivers Installation	4
7.	Known Issues/Limitations	7
8.	Support.....	7

Version History

Version: 1.0

Version	Details	Release
1.0	Windows Chipset Driver – Alpha Release	July 2024

1. Overview

Windows Chipset Driver includes set of peripheral drivers on the selected platform.

2. New in This Release

- Chipset driver for Embedded Turin with Alpha quality

3. Driver & Platform Support

SOC	Platform	OS	Chipset Driver
Turin	Chalupa	Windows Server 2022 x64, Windows Server 2025 x64	AMD_Server_Software_6.05.13.1132

4. Features list

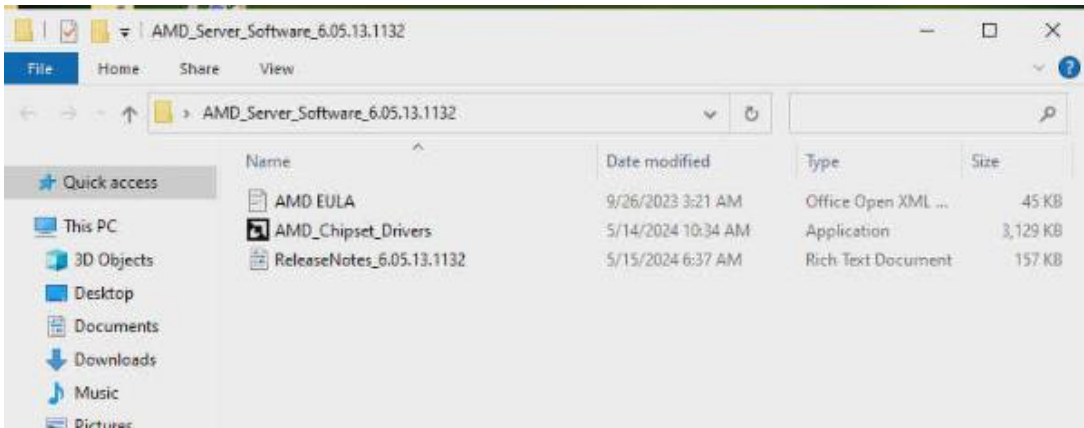
Features Group	Features category	Comments	Included in Package
Peripherals	AMD PSP Drivers (NULL)	Null Driver	Yes
Peripherals	GPIO2		Yes
Peripherals	I2C		Yes
Peripherals	UART	115200, 3M, 4M baud rates are supported with loop back.	Yes
Peripherals	AMD EPYC DRTM Boot		Yes
Peripherals	AMD Interface		Yes
Peripherals	AMD HSMP Driver		Yes

5. Platform configurations

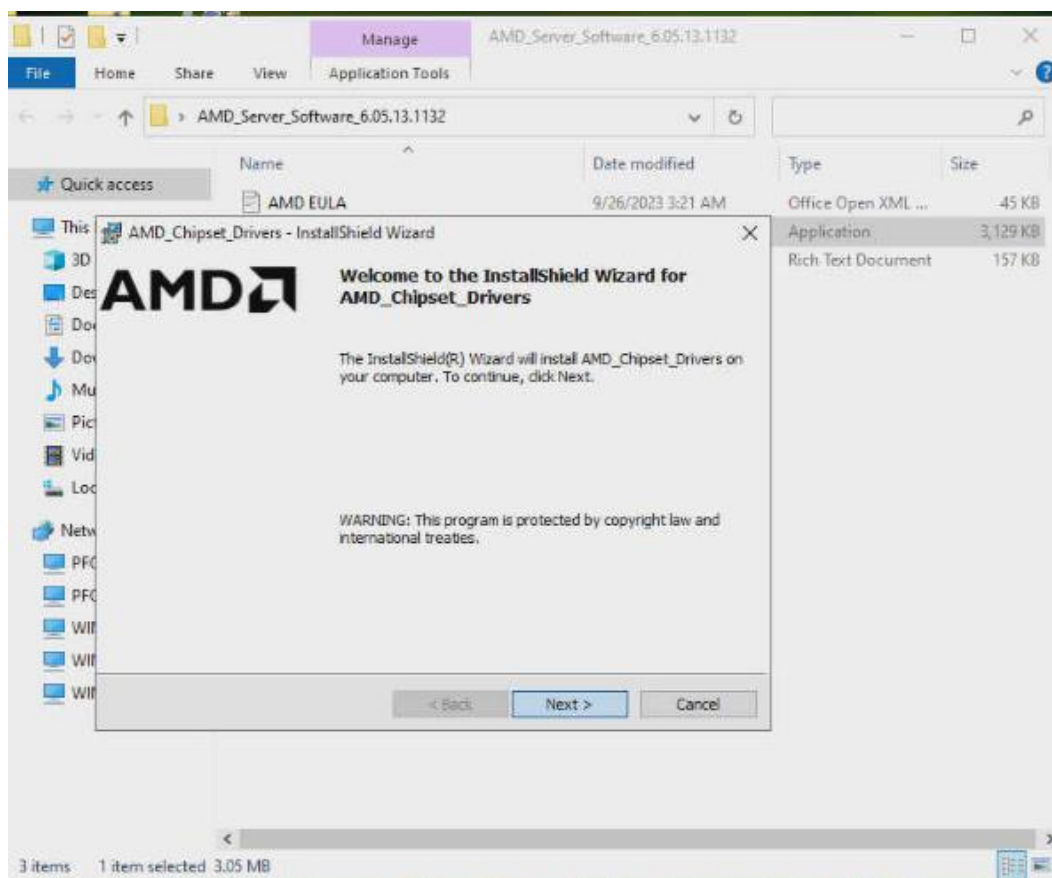
Embedded Turin	
Product	EPYC 9000 Series
OPN	TURIN BRH SP5 SW 360W TBD 93703 C0a 64C PLATSI UNSECURE
Main Board	Chalupa
BIOS	RCPT0070A
TDP	360W
CPU	SP5
Base CPU Freq	2000
Boost CPU Freq	3700
CPU Cores	192 cores per socket
CPU L1 Cache	2 Mi B
CPU L2 Cache	64 Mi B
Total L3 cache per socket	256 Mi B
Memory Type	32GB
Memory	32GB
DDR TransferRate (MT/s)	4800 MT/s
BMC	sp6_v2.11.0.01

6. Chipset and PSLED Drivers Installation

- a) Click AMD_Chipset_Drivers exe to begin installation.



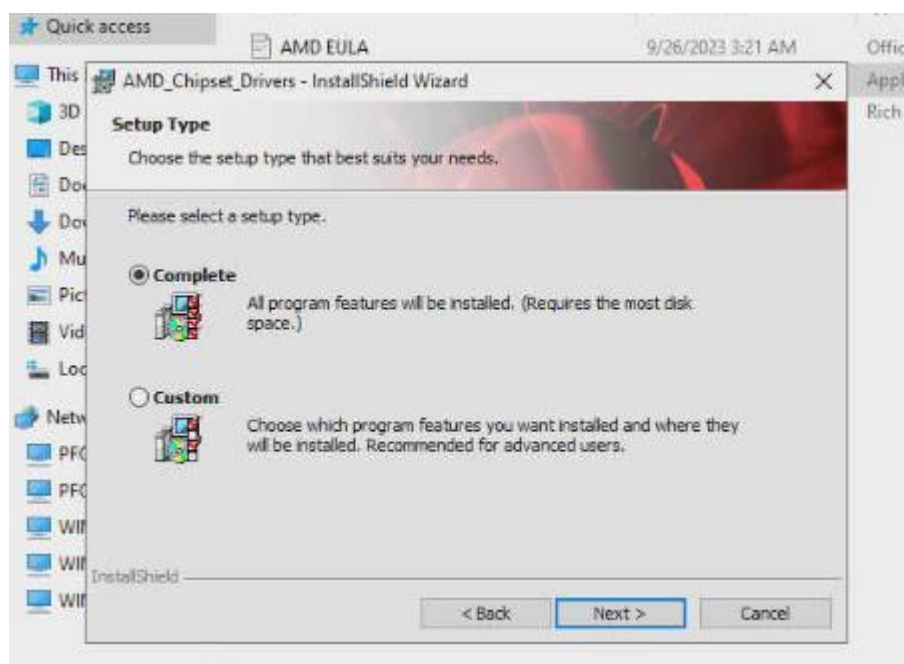
- b) After clicking, Driver installing UI will be shown preparing system for Driver Installer. Click next to begin



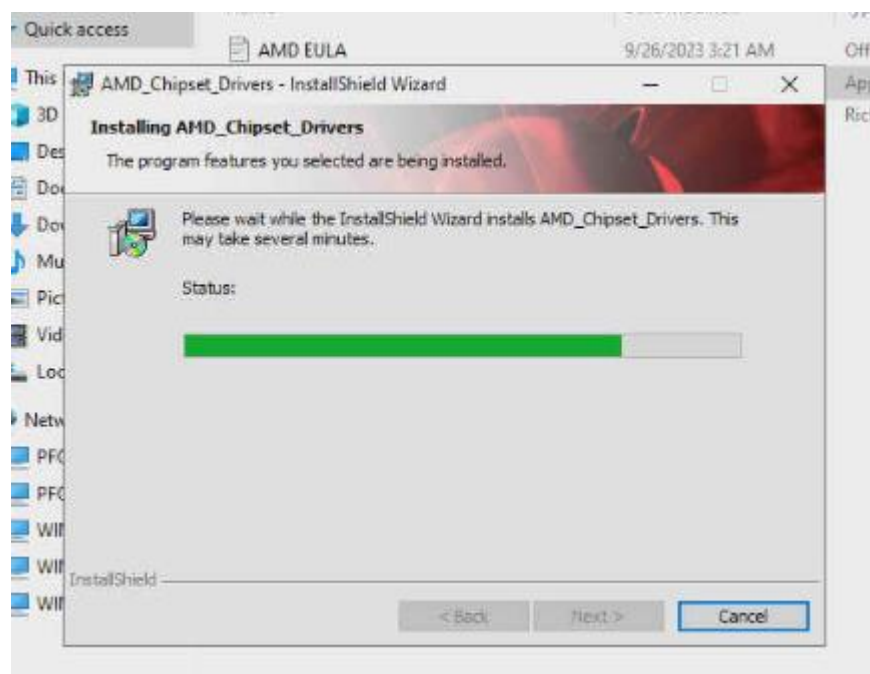
- c) UI will request for EULA acceptance. Accept and click Next to proceed



- d) Select Complete to install all features or Custom to control drivers to be installed. Click Next to proceed with your selection.



- e) The drivers will start installing while the progress bar shows loading



- f) Once installation is complete the UI will show following window with options to see the installation log and summary that will show the installed drivers and their installation status as well.



- g) Install PSLED driver
h) Both Chipset and PSLED can be visible in 'Add/Remove Programs'

Uninstallation:

To uninstall the driver, go to control panel > uninstall a program. From the list select AMD Chipset driver and UI will open to uninstall the driver.

7. Known Issues/Limitations

1. Yellow Bangs observed on multiple PCI devices and SMBus controller.

8. Support

Please contact your Field Application Engineer for support on this release.

© 2024 Advanced Micro Devices, Inc. All rights reserved.

The information contained herein is for informational purposes only, and is subject to change without notice. While every precaution has been taken in the preparation of this document, it may contain technical inaccuracies, omissions and typographical errors, and AMD is under no obligation to update or otherwise correct this information. Advanced Micro Devices, Inc. makes no representations or warranties with respect to the accuracy or completeness of the contents of this document, and assumes no liability of any kind, including the implied warranties of noninfringement, merchantability or fitness for particular purposes, with respect to the operation or use of AMD hardware, software or other products described herein. No license, including implied or arising by estoppel, to any intellectual property rights is granted by this document. Terms and limitations applicable to the purchase or use of AMD's products are as set forth in a signed agreement between the parties or in AMD's Standard Terms and Conditions of Sale. Any unauthorized copying, alteration, distribution, transmission, performance, display or other use of this material is prohibited.

Trademarks

AMD, the AMD Arrow logo, AMD AllDay, AMD Virtualization, AMD-V, PowerPlay, Vari-Bright, and combinations thereof are trademarks of Advanced Micro Devices, Inc. Other product names used in this publication are for identification purposes only and may be trademarks of their respective companies.

Dolby is a trademark of Dolby Laboratories.

HDMI is a trademark of HDMI Licensing, LLC.

HyperTransport is a licensed trademark of the HyperTransport Technology Consortium.

Microsoft, Windows, Windows Vista, and DirectX are registered trademarks of Microsoft Corporation in the US and/or other countries.

MMX is a trademark of Intel Corporation.

OpenCL is a trademark of Apple Inc. used by permission by Khronos.

PCIe is a registered trademark of PCI-Special Interest Group (PCI-SIG).

USB Type-C® and USB-C® are registered trademarks of USB Implementers Forum.

Reverse engineering or disassembly is prohibited.

USE OF THIS PRODUCT IN ANY MANNER THAT COMPLIES WITH THE MPEG ACTUAL OR DE FACTO VIDEO AND/OR AUDIO STANDARDS IS EXPRESSLY PROHIBITED WITHOUT ALL NECESSARY LICENSES UNDER APPLICABLE PATENTS. SUCH LICENSES MAY BE ACQUIRED FROM VARIOUS THIRD PARTIES INCLUDING, BUT NOT LIMITED TO, IN THE MPEG PATENT PORTFOLIO, WHICH LICENSE IS AVAILABLE FROM MPEG LA, L.L.C., 6312 S. FIDDLERS GREEN CIRCLE, SUITE 400E, GREENWOOD VILLAGE, COLORADO 80111.
